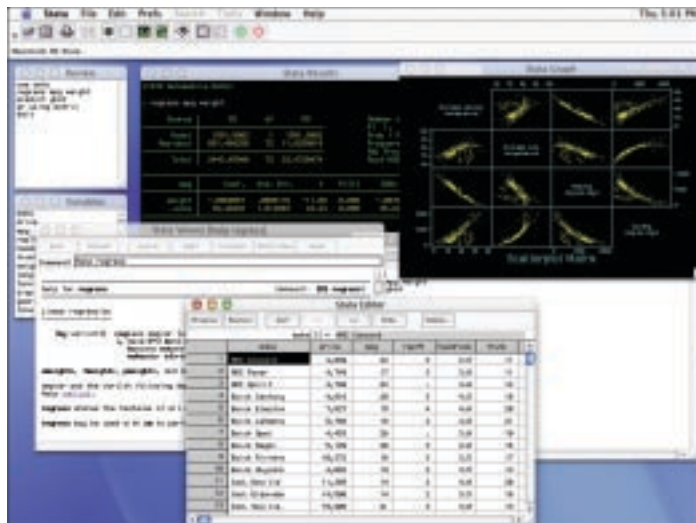


THE STATA NEWS

Volume 16

April/May/June 2001

www.stata.com

Stata for Macintosh on OS X

In our commitment to develop and provide support for every major computer platform, Stata Corporation is pleased to announce that an updated version of Stata 7 for Macintosh will be available by the beginning of July that will run natively on OS X. This update will ship as a single application that will also run natively on Mac OS 8.6/9.x. Once the update becomes available, current users of Stata 7 for Macintosh may upgrade at no charge by using Stata's update facility. Stata users who are not running OS X will still be able to use the updated version on Mac OS. In addition to the updated graphical-interface version, a Unix console version of Stata will be available exclusively from www.stata.com that will run on OS X.

Running on OS X, Stata takes advantage of the improved operating system stability and multitasking environment. Users will see improvements in file I/O such as viewing help files, running do-files and ado-files, and outputting logs. Windows will redraw instantaneously and crashes in other programs will have no effect on Stata.

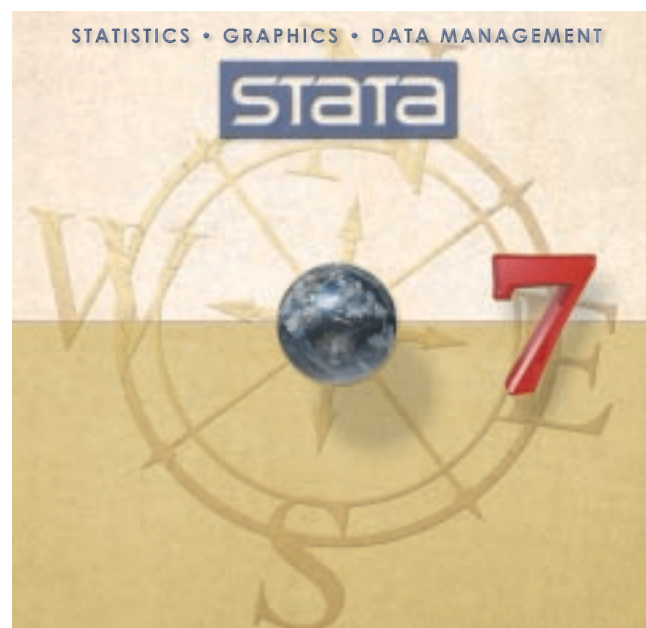
A few enhancements have been made to the updated version to conform to OS X interface changes but it is otherwise functionally identical to the currently shipping version. It includes the same improvements over previous releases of Stata such as improved output, net searches for user-written programs, longer variable names, byable ado-files, speed improvements, as well as enhancements and additions to Stata's statistical capabilities. It also includes recent additions such as a setable scrollbar size for the Results window and setable column widths for the Variables window. Stata is also much more cooperative in sharing processing time with other applications.

Stata has strong support for cross-platform use — datasets and programs are completely compatible across platforms. You can use Stata for Windows or Unix at work and Stata for Macintosh at home and seamlessly transfer data, graphics files, and analyses back and forth—without converting any files. Ordering information can be found online, or you may call 1-800-STATAPC (1-800-782-8272).

The minimum requirement for Stata for Macintosh is a Power Macintosh running Mac OS 8.6/9.x or OS X, 4 MB of available memory, and 20 MB of available hard disk space.

Have you upgraded to Stata 7?

Many of you have already upgraded, but if you have not, visit www.stata.com/stata7/ for details on the new release and for ordering information. If you have questions, email upgrade@stata.com or call 1-800-782-8272 (1-979-696-4600 worldwide).



Inside this issue:

Stata for Macintosh on OS X	1
Have you upgraded to Stata 7?	1
Latest NetCourse schedule	2
From the Stata Bookstore	3
From the Stata Gift Shop	3
Stata user group meetings	4

Latest NetCourse™ schedule

The Stata NetCourses™ have been well-received by participants as is reflected in the following remarks:

- “I thought the material was excellent. I was also impressed by the opportunity the students had to ask questions and the efforts made by the Course Leaders to answer them regardless of how complicated the question.”
- “I thought the NetCourse was superior because of the quality of the notes and the emphasis on intuition.”
- “The NetCourses are simply great.”

A NetCourse is a “lecture” posted to the NetCourse website on Friday. (Some NetCourses are email-based rather than web-based. In this case, lectures are emailed to the course participants.) After reading the lecture over the weekend or Monday, participants can post questions and comments to the course discussion area. Course Leaders respond to the questions and comments on Tuesday and Thursday. The other participants are encouraged to amplify or otherwise respond to the questions or comments as well. The next lecture is then posted on Friday, and the process repeats. After the last lecture, discussion continues for a few additional weeks until the course concludes.

A brief summary of the upcoming NetCourses is listed below. For more details on how NetCourses work and for course syllabi, visit www.stata.com/info/products/netcourse.

An enrollment form for the upcoming NetCourses has been enclosed with the Stata News. You can also enroll online at www.stata.com/info/products/netcourse/enrollment.html.

NC-101. Introduction to Stata

NC-101 is designed to take smart, knowledgeable people and turn them into proficient interactive users of Stata. The course covers not just the obvious such as getting data into Stata, but also covers lots of detailed techniques and tricks to make you a powerful Stata user. From web update features and match-merging to using `by` groups and explicit subscribing, many of Stata’s key concepts are explored.

Introduction to Stata
Prerequisites
Stata 7
Date offered
July 20 – August 31
Course Leaders
Kevin Crow and Pete Huckelba
Enrollment Deadline
July 16
Price
\$95

NC-151. Introduction to Stata programming

NC-151 is intended for all Stata users. Through a combination of lectures, example applications, and carefully chosen problems, the course addresses the full range of methods and techniques necessary to be most productive in the Stata environment. Beginning with effective ways to organize both simple and complicated analyses in Stata, NetCourse 151 then moves into programming elements that can be used to work more efficiently. Key programming topics include macro processing, program flow of control, using `do-files`, programming `ado-files`, Monte-Carlo simulations, and bootstrapped standard errors.

Introduction to Stata programming
Prerequisites
Stata 7; basic knowledge of using Stata interactively
Date offered
July 20 – August 31
Course Leaders
Shannon Driver and Weihua Guan
Enrollment Deadline
July 16
Price
\$125

NC-152. Advanced Stata programming

The goal of NC-152 is to turn knowledgeable Stata programmers into Stata programming masters. It is assumed that you know what needs programming and to some extent how. Now, you want to add your own commands to Stata and learn to produce professional-level tools for use by you and others.

NC-152 teaches you how to create and debug new commands that are indistinguishable from the commands in Stata. You will learn how to parse both standard and nonstandard Stata syntax using the intuitive `syntax` command, how to manage and process saved results, how to process `by` groups, and more.

Advanced Stata programming
Prerequisites
Stata 7; NC-151 or equivalent knowledge
Date offered
October 19 – December 7
Course Leaders
Jeff Pitblado and Allen McDowell
Enrollment Deadline
October 15
Price
\$150

From the Stata Bookstore

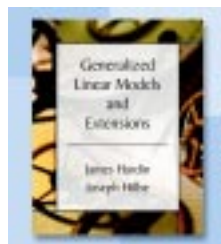
Generalized Linear Models and Extensions

James Hardin and Joseph Hilbe provide a comprehensive new text on Generalized Linear Models (GLMs) that serves as the perfect companion text to Stata's newly updated `glm` command which ships with Stata 7. By mixing statistical theory, analysis of algorithms, and applied examples (all performed using Stata), this text gives a complete insight to the inner workings of GLMs.

The text begins with a thorough derivation (from first principles) of the iterative re-weighted least squares algorithm (IRLS) from its roots in maximum likelihood. In doing so, the concepts of Newton–Raphson estimation, Fisher scoring, IRLS, exponential families, maximum likelihood, maximum quasi-likelihood are defined and the relationships between these concepts are clearly demonstrated. The middle chapters of the text describe (in great detail and with full derivations) the various GLM families supported by Stata's `glm` command, including the Gaussian (normal), gamma, inverse Gaussian, power, binomial, Poisson, and negative binomial. The final chapters of the text are devoted to more advanced topics, which include multinomial response models (both ordered and unordered), and fixed- and random-effects models.

Stata's updated-for-version 7 `glm` command has many additional features. Foremost among these features are numerous alternative variance estimators (such as the outer product of the gradient (OPG), sandwich, unbiased sandwich, jackknife, bootstrap, and HAC estimators), and the ability of users to define their own families and links. Both these features, as well as `glm`'s other features, are fully documented in this companion text.

Additional information—including a detailed table of contents—on this book, as well as others, can be found on the Stata Bookstore at www.stata.com/bookstore. You may order books from the Bookstore website or use the enclosed order form.



Title: *Generalized Linear Models and Extensions*
 Authors: James Hardin & Joseph Hilbe
 Publisher: Stata Press
 Copyright: 2001
 ISBN: 1-881228-60-6
 Pages: 245; paperback
 Price: \$45.00

Medical Statistics: A Commonsense Approach (3d edition)

This text is an introductory course in statistics geared towards students in the medical sciences. Most introductory statistics texts aimed at students in non-mathematical fields are indeed non-mathematical, but oftentimes as a result become mere cookbooks of statistical methods containing many formulas for statistical techniques but little field-specific applications and only the most superficial of scientific examples.

This text, on the other hand, relegates the formulas to an appendix in light of the fact that all calculations are now carried out via personal computers and statistical software packages, such as Stata. By the avoidance of formulas in the main text, the authors are free to concentrate more on statistical concepts and on the interpretation of statistical results as they apply to the medical sciences.

The third edition, updated in 1999, covers numerous applied topics that are required reading for those wishing to interpret the statistics in papers published in the leading medical journals. The text begins with elementary data description, and proceeds to cover the common probability distributions: the normal, binomial, and Poisson. The middle chapters of the text then cover one- and two-sample tests, linear regression, and all the usual concepts therein. The latter chapters of the text are devoted to statistical issues of particular interest to medical researchers, including logistic regression, randomised trials, case–control studies, analysis of rates and other basic survival analysis, ethical considerations, and sample-size calculations. Throughout, numerous datasets and case studies straight out of the medical literature are utilized.

For more information, including a table of contents, visit the Stata bookstore at www.stata.com/bookstore/.



Title: *Medical Statistics: A Commonsense Approach*
 (3d ed)
 Authors: Michael J. Campbell & David Machin
 Publisher: John Wiley & Sons
 Copyright: 1999
 ISBN: 0-471-98721-2
 Pages: 203; paperback
 Price: \$34.75

From the Stata Gift Shop

Have you seen the new Stata 7 t-shirt?



Back



Front

Stata mugs, totes, caps, and other t-shirts are also available. Visit www.stata.com/giftshop/.

Stata user group meetings

First North American Stata user group meeting proceedings

The first North American Stata user group meeting took place at Longwood Galleria Conference Center, Boston, MA, on March 12-13. The meeting was organized by Christopher F. Baum, Boston College, Nicholas J. Cox, University of Durham, UK, and Marcello Pagano, Harvard School of Public Health. More than 40 people attended, including Joseph Newton, Texas A&M University and Editor of the Stata Technical Bulletin, William Gould, President of StataCorp, and David Drukker, Associate Director of Econometrics at StataCorp.

The proceedings of the meeting can be found on the Stata website at www.stata.com/support/meeting/1nasug/. The proceedings include abstracts for the presented papers along with a detailed meeting summary.

7th annual UK Stata user group meeting proceedings

The seventh UK Stata user group meeting attracted about 50 participants to the Royal Statistical Society in London on May 14-15. The meeting was organized by Bianca L. De Stavola, London School of Hygiene and Tropical Medicine, and Stephen Jenkins, University of Essex, UK, with the administrative support of Timberlake Consultants, who also generously sponsored the speakers. William Gould and Robert Gutierrez from StataCorp attended. The UK meeting attracted participants from other countries, such as the US, Sweden, and Italy.

Abstracts for the presented papers and a detailed summary of the meeting can be found by visiting the Stata website, www.stata.com/support/meeting/7uk/.

THE STATA NEWS is published 4 times a year. It is free to all registered users of Stata.



HOW TO REACH US

StataCorp
4905 Lakeway Drive
College Station TX 77845
USA

PHONE 979-696-4600
FAX 979-696-4601
EMAIL stata@stata.com
WEB www.stata.com

Please include your Stata serial number with all correspondence.

INTERNATIONAL DISTRIBUTORS

Applied Stat. & Systems Consultants

Serving Israel
tel: +972 (0)4 6100101
email: stata@watchwise.net

Axon Technology Company Ltd

Serving Taiwan
tel: +886-(0)2-27045535
email: hank@axon.axon.com.tw

Chips Electronics

Serving Brunei, Indonesia, Malaysia, Singapore
tel: 62 - 21 - 452 17 61
email: puyuh23@indo.net.id

Dittrich & Partner Consulting

Serving Austria, Czech Republic, Germany, Hungary, Poland
tel: +49 2 12 / 26 066 - 0
email: sales@dpc.de

IEM

Serving Botswana, Lesotho, Namibia, Mozambique, South Africa, Swaziland, Zimbabwe
tel: +27-11-8286169
email: iem@hot.co.za

JasonTech Inc

Serving Korea
tel: +82-(0)2-420-6700
email: info@jat.co.kr

Mercostat Consultores

Serving Argentina, Brazil, Paraguay, Uruguay
tel: 598-2-613-7905
email: mercost@adinet.com.uy

Metrika Consulting

Serving the Baltic States, Denmark, Finland, Iceland, Norway, Sweden
tel: +46-708-163128
email: sales@metrika.se

MultION Consulting S.A. de C.V.

Serving Mexico
tel: 52 (5) 559-4050 Ext 190
email: multion@multion.com.mx

Ritme Informatique

Serving Belgium, France, Luxembourg
tel: +33 (0)1 42 46 00 42
email: info@ritme.com

Scientific Solutions S.A.

Serving Switzerland
tel: 41 (0)21 711 15 20
email: info@scientific-solutions.ch

Smit Consult

Serving The Netherlands
tel: +31 416-378 125
email: info@smitconsult.nl

Survey Design & Analysis Services

Serving Australia, New Zealand
tel: +61 (0)3 9878 7373
email: sales@survey-design.com.au

Timberlake Consultants

Serving Eire, U.K.
tel: +44 (0)208 697 3377
email: info@timberlake.co.uk

Timberlake Consultants s.r.l.

Serving Italy
tel: +39 (0)864 210101
email: timberlake@arc.it

Timberlake Consulting S.L.

Serving Spain
tel: +34 (9) 5 421 9369
email: timberlake@zoom.es

Timberlake Consultores, Lda.

Serving Portugal
tel: +351 (0)1 471 73 47
email: timberlake.co@mail.telepac.pt

Vishvas Marketing-Mix Services

Serving India
tel: 91-251-440087
email: vishvas@vsnl.com