

## xthdidregress — Heterogeneous difference in differences for panel data

|                                 |                                      |                                |                                      |
|---------------------------------|--------------------------------------|--------------------------------|--------------------------------------|
| <a href="#">Description</a>     | <a href="#">Quick start</a>          | <a href="#">Menu</a>           | <a href="#">Syntax</a>               |
| <a href="#">Options</a>         | <a href="#">Remarks and examples</a> | <a href="#">Stored results</a> | <a href="#">Methods and formulas</a> |
| <a href="#">Acknowledgments</a> | <a href="#">References</a>           | <a href="#">Also see</a>       |                                      |

## Description

`xthdidregress` estimates average treatment effects on the treated (ATEs) that may vary over time and over treatment cohorts. Treatment cohorts are groups subject to treatment at different points in time. `xthdidregress` provides four estimators: extended two-way fixed effects (TWFE), regression adjustment (RA), inverse-probability weighting (IPW), and augmented inverse-probability weighting (AIPW). See [\[CAUSAL\] teffects intro](#) for a discussion of RA, IPW, and AIPW estimators.

`xthdidregress` is for panel data. For repeated cross-sectional data, see [\[CAUSAL\] hdidregress](#).

## Quick start

Estimate ATEs of treatment `treat` on outcome `y` with group `grpvar`; use the RA estimator and model `y` with covariate `x` on `xtset` data

```
xthdidregress ra (y x) (treat), group(grpvar)
```

Same as above, but use the TWFE estimator

```
xthdidregress twfe (y x) (treat), group(grpvar)
```

Use the IPW estimator and model `treat` using covariate `z`

```
xthdidregress ipw (y) (treat z), group(grpvar)
```

Use the AIPW estimator, model `y` using covariate `x`, and model `treat` using covariate `z`

```
xthdidregress aipw (y x) (treat z), group(grpvar)
```

Same as above, but use the not-yet-treated group as the control group

```
xthdidregress aipw (y x) (treat z), group(grpvar) ///
    controlgroup(notyet)
```

Same as above, but cluster at the county level

```
xthdidregress aipw (y x) (treat z), group(grpvar) ///
    controlgroup(notyet) vce(cluster county)
```

## Menu

Statistics > Causal inference/treatment effects > Continuous outcomes > Heterogeneous DID > Panel-data heterogeneous DID (TWFE)

Statistics > Causal inference/treatment effects > Continuous outcomes > Heterogeneous DID > Panel-data heterogeneous DID (RA)

Statistics > Causal inference/treatment effects > Continuous outcomes > Heterogeneous DID > Panel-data heterogeneous DID (IPW)

Statistics > Causal inference/treatment effects > Continuous outcomes > Heterogeneous DID > Panel-data heterogeneous DID (AIPW)

## Syntax

*Two-way fixed effects*

```
xthdidregress twfe (ovar [omvarlist]) (tvar) [if] [in] [weight],  
  group(groupvar) [options]
```

*Regression adjustment*

```
xthdidregress ra (ovar [omvarlist]) (tvar) [if] [in] [weight],  
  group(groupvar) [options]
```

*Inverse-probability weighting*

```
xthdidregress ipw (ovar) (tvar [tmvarlist]) [if] [in] [weight],  
  group(groupvar) [options]
```

*Augmented inverse-probability weighting*

```
xthdidregress aipw (ovar [omvarlist]) (tvar [tmvarlist]) [if] [in] [weight],  
  group(groupvar) [options]
```

*ovar* is a continuous outcome of interest.

*omvarlist* specifies the covariates in the outcome model and may contain factor variables; see [\[U\] 11.4.3 Factor variables](#).

*tvar* must be a binary variable indicating observations subject to treatment.

*tmvarlist* specifies the covariates in the treatment model and may contain factor variables; see [\[U\] 11.4.3 Factor variables](#).

*groupvar* is a categorical variable that indicates the group level at which the treatment occurs.

| <i>options</i>  | Description  |
|---|--|
| Model   |  |
| * <u>group</u> ( <i>groupvar</i> )                                      | specify group variable   |
| <u>controlgroup</u> ( <i>cgtype</i> )                                   | specify the type of control group; default is <code>never</code>   |
| <u>cohortvar</u> ( <i>cvar</i> [, <code>replace</code> ])               | specify the variable name for the generated cohort   |
| ‡ <u>hettype</u> ( <i>hetspec</i> )                                     | type of heterogeneity; default is <code>timecohort</code>  |
| SE/Robust   |  |
| <u>vce</u> ( <i>vcetype</i> )   | <i>vcetype</i> may be <code>cluster</code> <i>clustvar</i> , <code>robust</code> , <code>bootstrap</code> , or <code>jackknife</code>            |
| Reporting   |  |
| <u>level</u> (#)  | set confidence level; default is <code>level(95)</code>  |
| [ <code>no</code> ] <u>log</u>  | suppress iteration log   |
| <u>nodots</u>   | suppress replication dots  |
| <u>display_options</u>  | control columns and column formats, row spacing, line width, display of omitted variables and base and empty cells, and factor-variable labeling |
| <u>coeflegend</u>   | display legend instead of statistics   |
| * <u>group</u> ( <i>groupvar</i> ) is required.                         |  |
| ‡This option may be specified only when <code>twfe</code> is specified. |  |
| <i>cgtype</i>   | Description  |
| <code>never</code>  | use the never-treated group as the control group; the default  |
| <code>notyet</code>   | use the not-yet-treated group as the control group   |
| <i>hetspec</i>  | Description  |
| <code>timecohort</code>   | heterogeneous treatment effects over time and cohort; the default  |
| <code>time</code>   | heterogeneous treatment effects over time  |
| <code>cohort</code>   | heterogeneous treatment effects over cohort  |

A panel variable and a time variable must be specified using `xtset`; see [XT] [xtset](#).

`by`, `collect`, and `statsby` are allowed; see [U] [11.1.10 Prefix commands](#).

`fweights`, `awweights`, and `pweights` are allowed; see [U] [11.1.6 weight](#). Weights must be constant within panel.

`coeflegend` does not appear in the dialog box.

See [U] [20 Estimation and postestimation commands](#) for more capabilities of estimation commands.

## Options

### Model

`group(groupvar)` specifies a group variable that indicates the group level at which the treatment occurs. *groupvar* may be, for example, states, counties, or hospitals. `group()` also defines the level clustering for the default cluster-robust standard errors. `group()` is required. You may specify only one group variable.

`controlgroup(cgtype)` specifies the type of control group. A control group can be either a never-treated group or a not-yet-treated group. A never-treated group refers to the units that are untreated from the first to the last period. A not-yet-treated group refers to the units that are untreated up to a specific period. *cgtype* can be one of `never`, referring to the never-treated group, or `notyet`, referring to the not-yet-treated group. By default, *cgtype* is `never`.

`cohortvar(cvar [, replace])` specifies the variable name *cvar* for the generated cohort variable. The cohort variable is a categorical variable indicating the period when the unit is first treated. By default, `_did_cohort` is used as the name of the cohort variable. If `_did_cohort` already exists in the dataset, it is replaced if option `cohortvar()` is not specified.

If suboption `replace` is specified, *cvar* is replaced.

`hettype(hetspec)` specifies time or cohort heterogeneity for the `twfe` estimator. By default, treatment is interacted with time and cohort. You may choose to keep one of time or cohort interactions using *hetspec*.

*hetspec* may be one of `timecohort` for heterogeneous treatment effects over both time and cohort, `time` for heterogeneous treatment effects over time only, or `cohort` for heterogeneous treatment effects over cohort only. By default, *hetspec* is `timecohort`.

### SE/Robust

`vce(vcetype)` specifies the type of standard error reported, which includes types that allow for intragroup correlation (`cluster clustvar`), that are robust to intragroup correlation among group variable (`robust`), and that use bootstrap or jackknife sampling done at the panel level (`bootstrap`, `jackknife`); see [R] [vce\\_option](#).

`vce(cluster clustvar)`, the default, uses the variable specified in `group(groupvar)`.

Specifying `vce(robust)` is equivalent to specifying `vce(cluster clustvar)`, where *clustvar* is the variable specified in the `group(groupvar)` option.

### Reporting

`level(#)`; see [R] [Estimation options](#).

`log` and `nolog` specify whether to display the iteration log. The iteration log is displayed by default unless you used `set iterlog off` to suppress it; see `set iterlog` in [R] [set iter](#).

`nodots` suppresses display of the replication dots.

`display_options`: `nocl`, `nopvalues`, `cformat(%fmt)`, `pformat(%fmt)`, `sformat(%fmt)`, and `no1-stretch`; see [R] [Estimation options](#).

The following option is available with `xthdidregress` but is not shown in the dialog box:

`coeflegend`; see [R] [Estimation options](#).

## Remarks and examples

It is common to study the effects of a treatment, for example, a policy or intervention, on a group. `xthdidregress` is for data where the treated groups are subject to the treatment at different points in time and they remain exposed to the treatment. For example, a health policy such as an increase in the age to purchase cigarettes is implemented in a given region, and over time, other regions decide to imitate the initiative. Another example is change in work policies across industries. Perhaps airlines implement a minimum number of hours between shifts for safety reasons. The policy is subsequently adopted by other similar industries. Some similar industries may never adopt the policy, remaining untreated, or it might be that all similar industries eventually adopt the policy.

`xthdidregress` estimates ATET parameters that change over time and treatment cohorts (groups treated at different points in time). Each one of these ATETs has the same interpretation that the parameters of a two-time two-group difference-in-differences (DID) parameter would have. Because there are multiple DID parameters, we refer to them as heterogeneous treatment effects or as heterogeneous DID. This is in contrast to estimating only one ATET, which assumes there is no variation across time or cohort. If you assume no variation across time or cohort, you may use `xtdidregress`; see [CAUSAL] [didregress](#).

`xthdidregress` provides four estimators: TWFE, outlined in [Wooldridge \(2021\)](#); RA, IPW, and AIPW, outlined in [Callaway and Sant’Anna \(2021\)](#). Each one of these estimators fits a model for the outcome of interest, a model for the treatment, or a model for both. For example, RA and TWFE model the outcome; IPW models the treatment; and AIPW models both. If the model for the outcome is correctly specified, RA and TWFE are best, with TWFE being more efficient. If the treatment model is correctly specified, IPW should be best. AIPW models both treatment and outcome. If at least one of the models is correctly specified, it provides consistent estimates. Thus, it allows us to misspecify one of the models and still get consistent estimates, a property called double robustness. See [CAUSAL] [teffects intro](#) for a discussion of RA, IPW, and AIPW estimators.

`xthdidregress` is for panel data. For repeated cross-sectional data, see [CAUSAL] [hdidregress](#). Below, we illustrate how to use `xthdidregress`. For more information about the methods used below, see [CAUSAL] [DID intro](#). For general discussions about the methods, see [Roth et al. \(2022\)](#) and [de Chaisemartin and D’Haultfœuille \(forthcoming\)](#) and the references therein.

### ► Example 1: Fitting a heterogeneous DID model

We are interested in how the number of registrations of a dog breed with the American Kennel Club (AKC), `registered`, is affected by dogs being the protagonists in a movie, `movie`. We conjecture that the number of registrations increases if the dog breed appears as the protagonist in a movie. We also conjecture that registrations increase if the dog has won the Best in Show award from the Westminster Kennel Club, `best`, in the 10 years before 2034. We use simulated data, but there is some evidence of the effect of movies on dog breed registrations. See, for example, [Ghirlanda, Acerbi, and Herzog \(2014\)](#).

There are 141 dog breeds in our sample, which extends between the years 2031 and 2040. At the beginning of the sample, none of the breeds are featured in a movie. This changes in 2034, when four breeds are featured in movies. The next year in which we see an increase of breeds featured in movies is 2036, when 7 more breeds are featured. In 2037, there is a substantial increase, with 22 more breeds featured. There is no increase in breeds in movies thereafter. The table below illustrates this.

```
. use https://www.stata-press.com/data/r18/akc
(Fictional dog breed and AKC registration data)
. tabulate year movie
```

| Year  | Was a movie protagonist |     | Total |
|-------|-------------------------|-----|-------|
|       | 0                       | 1   |       |
| 2031  | 141                     | 0   | 141   |
| 2032  | 141                     | 0   | 141   |
| 2033  | 141                     | 0   | 141   |
| 2034  | 137                     | 4   | 141   |
| 2035  | 137                     | 4   | 141   |
| 2036  | 134                     | 7   | 141   |
| 2037  | 119                     | 22  | 141   |
| 2038  | 119                     | 22  | 141   |
| 2039  | 119                     | 22  | 141   |
| 2040  | 119                     | 22  | 141   |
| Total | 1,307                   | 103 | 1,410 |

We have a panel dataset. To obtain the effect of movie on registered controlling for best, we first `xtset` our data:

```
. xtset breed year
Panel variable: breed (strongly balanced)
Time variable: year, 2031 to 2040
Delta: 1 unit
```

We chose regression adjustment, `ra`, to fit our model (see [\[CAUSAL\] teffects ra](#) for details on this model). In the first set of parentheses, we define the outcome, `registered`, and any covariates that affect the outcome directly. In the second set of parentheses, we define the observation-level treatment variable, `movie`. Other models allow us to define covariates that affect the treatment, but this is not the case of the `ra` model. After the comma, we need to define the group variable in `group()`; this is a required option. The group variable defines at which level the treatment occurs and also identifies the clustering variable, which in this case is `breed`.

```
. xthdidregress ra (registered best) (movie), group(breed)
note: variable _did_cohort, containing cohort indicators formed by treatment
variable movie and group variable breed, was added to the dataset.
```

```
Computing ATET for each cohort and time:
```

```
Cohort 2034 (9): ..... done
```

```
Cohort 2036 (9): ..... done
```

```
Cohort 2037 (9): ..... done
```

```
Treatment and time information
```

```
Time variable: year
```

```
Time interval: 2031 to 2040
```

```
Control:      _did_cohort = 0
```

```
Treatment:   _did_cohort > 0
```

|                   | <b>_did_cohort</b> |
|-------------------|--------------------|
| Number of cohorts | 4                  |
| Number of obs     |                    |
| Never treated     | 1190               |
| 2034              | 40                 |
| 2036              | 30                 |
| 2037              | 150                |

```
Heterogeneous-treatment-effects regression      Number of obs   = 1,410
                                                Number of panels = 141
Estimator:      Regression adjustment
Panel variable:  breed
Treatment level: breed
Control group:   Never treated
```

(Std. err. adjusted for 141 clusters in breed)

| Cohort | ATET      | Robust<br>std. err. | z     | P> z  | [95% conf. interval] |          |
|--------|-----------|---------------------|-------|-------|----------------------|----------|
| 2034   |           |                     |       |       |                      |          |
| year   |           |                     |       |       |                      |          |
| 2032   | -254.8927 | 266.1024            | -0.96 | 0.338 | -776.4439            | 266.6584 |
| 2033   | -257.5329 | 217.9389            | -1.18 | 0.237 | -684.6852            | 169.6194 |
| 2034   | 701.1318  | 127.0935            | 5.52  | 0.000 | 452.0331             | 950.2304 |
| 2035   | 1099.044  | 282.0704            | 3.90  | 0.000 | 546.196              | 1651.892 |
| 2036   | 1367.632  | 225.8702            | 6.05  | 0.000 | 924.9343             | 1810.329 |
| 2037   | 2008.294  | 237.2396            | 8.47  | 0.000 | 1543.313             | 2473.275 |
| 2038   | 2472.624  | 278.2949            | 8.88  | 0.000 | 1927.176             | 3018.072 |
| 2039   | 2689.615  | 504.3324            | 5.33  | 0.000 | 1701.142             | 3678.088 |
| 2040   | 3110.97   | 568.916             | 5.47  | 0.000 | 1995.915             | 4226.025 |
| 2036   |           |                     |       |       |                      |          |
| year   |           |                     |       |       |                      |          |
| 2032   | 216.0259  | 122.9107            | 1.76  | 0.079 | -24.87472            | 456.9265 |
| 2033   | -172.5154 | 372.0776            | -0.46 | 0.643 | -901.7741            | 556.7433 |
| 2034   | -218.0495 | 504.5267            | -0.43 | 0.666 | -1206.904            | 770.8045 |
| 2035   | 621.033   | 156.1306            | 3.98  | 0.000 | 315.0227             | 927.0434 |
| 2036   | 999.0781  | 180.1055            | 5.55  | 0.000 | 646.0779             | 1352.078 |
| 2037   | 1003.333  | 250.5916            | 4.00  | 0.000 | 512.1829             | 1494.484 |
| 2038   | 1556.669  | 451.6914            | 3.45  | 0.001 | 671.3697             | 2441.967 |
| 2039   | 2590.674  | 662.6979            | 3.91  | 0.000 | 1291.81              | 3889.538 |
| 2040   | 2225.712  | 486.9917            | 4.57  | 0.000 | 1271.225             | 3180.198 |
| 2037   |           |                     |       |       |                      |          |
| year   |           |                     |       |       |                      |          |
| 2032   | -114.582  | 160.0972            | -0.72 | 0.474 | -428.3668            | 199.2028 |
| 2033   | -127.9856 | 183.3941            | -0.70 | 0.485 | -487.4315            | 231.4603 |
| 2034   | 33.40901  | 168.0312            | 0.20  | 0.842 | -295.9262            | 362.7442 |
| 2035   | 130.3495  | 166.2261            | 0.78  | 0.433 | -195.4477            | 456.1468 |
| 2036   | -10.48288 | 167.5059            | -0.06 | 0.950 | -338.7884            | 317.8226 |
| 2037   | 1717.016  | 268.5592            | 6.39  | 0.000 | 1190.65              | 2243.383 |
| 2038   | 2086.798  | 278.0215            | 7.51  | 0.000 | 1541.886             | 2631.71  |
| 2039   | 2473.611  | 268.186             | 9.22  | 0.000 | 1947.976             | 2999.246 |
| 2040   | 2835.117  | 378.6699            | 7.49  | 0.000 | 2092.938             | 3577.296 |

Note: ATET computed using covariates.

Notice the note below the command. A variable with the name `_did_cohort` has been generated. Using the group variable and the observation-level treatment, `xthdidregress` generated treatment-time cohorts. The new variable creates treatment groups based on the time when a group was first treated. For instance, if a Boxer and a Rottweiler are featured in movies in 2034, they are grouped in the 2034 cohort. The variable also contains a category for a control group. In this case, the control group is formed by the breeds that are not featured in a movie. Cohorts are an important input for estimation and for postestimation commands. You do not need to adhere to the default name, `_did_cohort`, and may provide your own name using the `cohortvar()` option.

Next appears a table that gives you a sense of the treatment groups and time. You see the time variable, year, and its range, 2031 to 2040. Then we see what defines a treated or a control group.

The table after provides group-level information about the cohort-time groups. The first row tells you the number of cohorts. Following the number of cohorts is a tabulation showing how many observations are in each cohort. For instance, 1,190 observations are never treated in our data. The table gives you a sense of the amount of information available in each cohort and might hint at the variability of cohort-level estimates.

The next table presents the ATET estimates. The first panel shows the ATETs for the 2034 cohort. We first have the 2032 ATET of  $-255$ , with a confidence interval that includes 0. This is as expected; before treatment, the effect should be 0. We should interpret the ATET to mean that among the breeds about which a movie was made in 2034, the expected AKC registrations in 2032 are 255 lower than if the breed had never been in a movie. At treatment onset, in 2034, we observe a treatment effect for the number of registrations of 701, and on the last year of our data, for the 2034 cohort, we see a treatment effect of 3,111 registrations. We interpret the results for the remaining cohorts similarly.

◀

## ► Example 2: Visualizing estimation results

In the example above, in the output table, we had three cohorts and nine time periods. There is a lot of information to process, and it can get even more daunting if we had more cohorts and time periods. To better visualize the results, we can use `estat atetplot`:

```
. estat atetplot
```

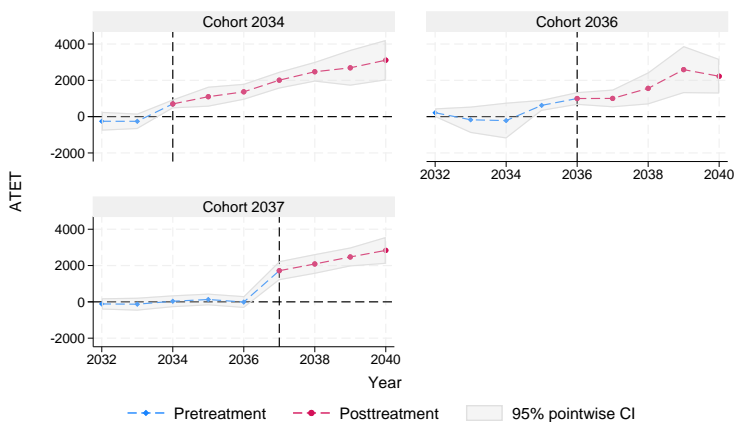


Figure 1. ATETs by cohort over time

The graph shows the pretreatment and the posttreatment ATETs for each cohort and their pointwise confidence intervals. ATETs increase over time after treatment and are flat before treatment.

◀



▷ Example 3: Less heterogeneity; aggregating and summarizing treatment effects

So far, we have allowed treatment effects to change over cohort and over time. But we might want to obtain only one treatment effect for each cohort, abstracting away from time variation within cohorts. You would get this using the postestimation command `estat aggregation`.

```
. estat aggregation, cohort
ATET over cohort                                     Number of obs = 1,410
                                                    (Std. err. adjusted for 141 clusters in breed)
```

| Cohort | ATET     | Robust<br>std. err. | z     | P> z  | [95% conf. interval] |          |
|--------|----------|---------------------|-------|-------|----------------------|----------|
| 2034   | 1921.33  | 187.2787            | 10.26 | 0.000 | 1554.271             | 2288.389 |
| 2036   | 1675.093 | 130.4929            | 12.84 | 0.000 | 1419.332             | 1930.855 |
| 2037   | 2278.136 | 166.5283            | 13.68 | 0.000 | 1951.746             | 2604.525 |

We now have 3 treatment effects to analyze instead of 27. For the 2034 cohort, we have a treatment effect of 1,921 registrations for the periods after treatment. For the 2036 cohort, the effect is 1,675 registrations, and for the 2037 cohort, it is 2,278. We cannot see how the treatment evolves over time for each cohort, but we have a sense of the average effect over time for each of them.

We could instead want to see the treatment effect at each point in time, abstracting from cohort-level variation.

```
. estat aggregation, time
ATET over time                                     Number of obs = 1,410
                                                    (Std. err. adjusted for 141 clusters in breed)
```

| Time | ATET     | Robust<br>std. err. | z     | P> z  | [95% conf. interval] |          |
|------|----------|---------------------|-------|-------|----------------------|----------|
| 2034 | 701.1318 | 127.0935            | 5.52  | 0.000 | 452.0331             | 950.2304 |
| 2035 | 1099.044 | 282.0704            | 3.90  | 0.000 | 546.196              | 1651.892 |
| 2036 | 1209.68  | 170.2043            | 7.11  | 0.000 | 876.0858             | 1543.275 |
| 2037 | 1672.655 | 202.1854            | 8.27  | 0.000 | 1276.379             | 2068.932 |
| 2038 | 2084.658 | 214.5072            | 9.72  | 0.000 | 1664.232             | 2505.084 |
| 2039 | 2528.847 | 225.8763            | 11.20 | 0.000 | 2086.138             | 2971.557 |
| 2040 | 2802.171 | 291.8412            | 9.60  | 0.000 | 2230.173             | 3374.17  |

We see the treatment effects for each one of the posttreatment periods. As before, we have the option to look at the effects graphically. We just need to use the graph option.

```
. estat aggregation, time graph
```

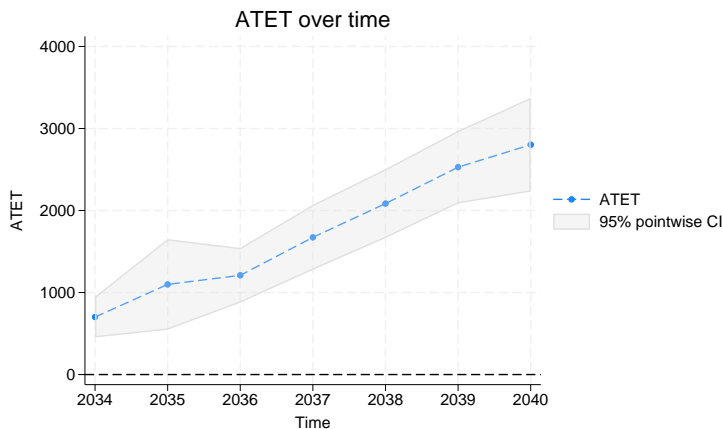


Figure 2. ATETs over time



### ▷ Example 4: Dynamic treatment effects

We could also ask what the evolution of the treatment effect is after treatment. For instance, we might want to know what happens one period after the onset of treatment, two periods after treatment, and so forth. It might be the case that treatment effects vanish over time or even change patterns. We might also want to see whether, before treatment, we observe a treatment effect or a pattern that might suggest that there is anticipation of treatment. `estat aggregation` allows us to answer these questions by using the dynamic option.

```
. estat aggregation, dynamic graph
```

Duration of exposure ATET Number of obs = 1,410  
 (Std. err. adjusted for 141 clusters in breed)

| Exposure | ATET      | Robust std. err. | z     | P> z  | [95% conf. interval] |          |
|----------|-----------|------------------|-------|-------|----------------------|----------|
| -5       | -114.582  | 160.0972         | -0.72 | 0.474 | -428.3668            | 199.2028 |
| -4       | -70.65034 | 156.3185         | -0.45 | 0.651 | -377.029             | 235.7283 |
| -3       | -.9117242 | 153.0999         | -0.01 | 0.995 | -300.982             | 299.1585 |
| -2       | 12.79653  | 144.8216         | 0.09  | 0.930 | -271.0486            | 296.6417 |
| -1       | 30.71473  | 132.8508         | 0.23  | 0.817 | -229.668             | 291.0975 |
| 0        | 1434.409  | 206.3277         | 6.95  | 0.000 | 1030.014             | 1838.804 |
| 1        | 1759.461  | 224.0229         | 7.85  | 0.000 | 1320.385             | 2198.538 |
| 2        | 2147.486  | 221.903          | 9.68  | 0.000 | 1712.564             | 2582.408 |
| 3        | 2651.452  | 284.8928         | 9.31  | 0.000 | 2093.073             | 3209.832 |
| 4        | 2366.805  | 267.4253         | 8.85  | 0.000 | 1842.661             | 2890.949 |
| 5        | 2689.615  | 504.3324         | 5.33  | 0.000 | 1701.142             | 3678.088 |
| 6        | 3110.97   | 568.916          | 5.47  | 0.000 | 1995.915             | 4226.025 |

Note: Exposure is the number of periods since the first treatment time.

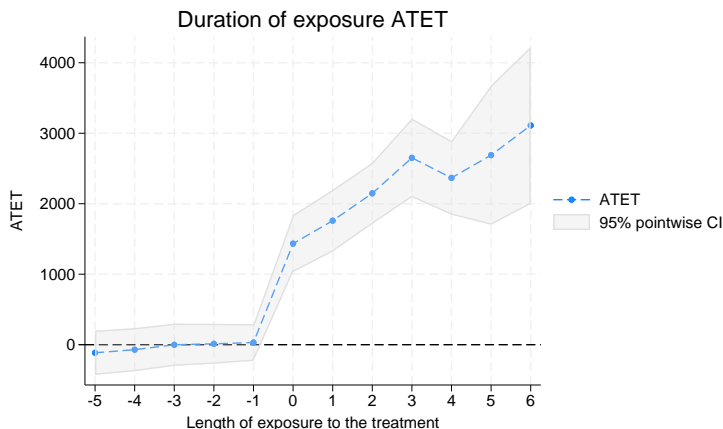


Figure 3. ATET dynamics

From the output table, we see that 5 periods before treatment onset, there is no significant treatment effect or, for that matter, no significant effect at any time of exposure before treatment. This suggests there is no anticipation of treatment. At treatment onset, 0, there is a positive effect, which seems to increase as exposure time to treatment augments.



### ► Example 5: TWFE estimation

The literature on heterogeneous DID started by pointing out the problems that arise when one assumes erroneously that the treatment effects are homogeneous. It suggested that TWFE estimation was inadequate. [Wooldridge \(2021\)](#) suggests that fixed-effects estimation can be used if we extend it to include interactions between treatment-time cohorts and time.

Another important insight of [Wooldridge \(2021\)](#) is that you can use pooled ordinary least squares and add panel-level averages of covariates and obtain the same point estimates as one would get with fixed-effects estimation in the context of DID estimation. This is an extension of the intuition by [Mundlak \(1978\)](#). `xthdidregress` and `hdidregress` fit pooled ordinary least-squares models using these ideas. Below, we present the results we obtain using the `twfe` estimator.

```
. xthdidregress twfe (registered best) (movie), group(breed)
note: variable _did_cohort, containing cohort indicators formed by treatment
      variable movie and group variable breed, was added to the dataset.
```

Computing ATETs using **margins** ...

Treatment and time information

```
Time variable: year
Time interval: 2031 to 2040
Control:      _did_cohort = 0
Treatment:    _did_cohort > 0
```

|                   | _did_cohort |
|-------------------|-------------|
| Number of cohorts | 4           |
| Number of obs     |             |
| Never treated     | 1190        |
| 2034              | 40          |
| 2036              | 30          |
| 2037              | 150         |

```
Heterogeneous-treatment-effects regression          Number of obs   = 1,410
                                                    Number of panels = 141
```

```
Estimator:      Two-way fixed effects
Panel variable:  breed
Treatment level: breed
Control group:   Never treated
Heterogeneity:  Cohort and time
```

(Std. err. adjusted for 141 clusters in breed)

| Cohort | ATET     | Robust<br>std. err. | t     | P> t  | [95% conf. interval] |          |
|--------|----------|---------------------|-------|-------|----------------------|----------|
| 2034   |          |                     |       |       |                      |          |
| year   |          |                     |       |       |                      |          |
| 2034   | 469.2023 | 148.8998            | 3.15  | 0.002 | 174.8195             | 763.5852 |
| 2035   | 823.8532 | 211.7491            | 3.89  | 0.000 | 405.2138             | 1242.493 |
| 2036   | 1108.669 | 179.8404            | 6.16  | 0.000 | 753.1144             | 1464.223 |
| 2037   | 1752.287 | 283.487             | 6.18  | 0.000 | 1191.818             | 2312.756 |
| 2038   | 2216.617 | 173.4446            | 12.78 | 0.000 | 1873.708             | 2559.526 |
| 2039   | 2433.608 | 521.4074            | 4.67  | 0.000 | 1402.757             | 3464.458 |
| 2040   | 2854.963 | 494.1892            | 5.78  | 0.000 | 1877.924             | 3832.001 |
| 2036   |          |                     |       |       |                      |          |
| year   |          |                     |       |       |                      |          |
| 2036   | 1336.121 | 96.75296            | 13.81 | 0.000 | 1144.835             | 1527.406 |
| 2037   | 1343.004 | 297.7487            | 4.51  | 0.000 | 754.3383             | 1931.669 |
| 2038   | 1896.339 | 399.2574            | 4.75  | 0.000 | 1106.985             | 2685.692 |
| 2039   | 2930.344 | 591.0712            | 4.96  | 0.000 | 1761.765             | 4098.924 |
| 2040   | 2565.382 | 578.9303            | 4.43  | 0.000 | 1420.806             | 3709.958 |
| 2037   |          |                     |       |       |                      |          |
| year   |          |                     |       |       |                      |          |
| 2037   | 1750.126 | 216.4288            | 8.09  | 0.000 | 1322.234             | 2178.017 |
| 2038   | 2119.908 | 217.1685            | 9.76  | 0.000 | 1690.554             | 2549.262 |
| 2039   | 2506.72  | 303.9392            | 8.25  | 0.000 | 1905.816             | 3107.624 |
| 2040   | 2868.227 | 313.1679            | 9.16  | 0.000 | 2249.077             | 3487.377 |

Note: ATET computed using covariates.

The output is almost the same as the one for the ra estimator in [example 1](#). There are a couple of noteworthy differences. First, the estimator fits an extended TWFE regression and then uses margins

to compute the treatment effects. The command tells us Computing ATETs using margins when it begins this more computationally intensive calculation.

Second, the ATET parameters are shown for each cohort only at the time of treatment exposure and for the periods thereafter but not for the pretreatment periods. As discussed in [Wooldridge \(2021\)](#), these are the parameters identified using the parallel-trends assumption he derives.

As we did before, we could use `estat aggregation` to explore different ways of looking at our treatment effects and `estat atetplot` to visualize the estimated ATETs.

◀

## ► Example 6: Reducing model complexity

When we fit the `ra` model, we had to estimate ATET parameters for each cohort over time. The complexity of the model grows with the number of cohorts and the number of time periods. As is described in [Methods and formulas](#), the `ra` estimator uses a different subset of the data to obtain each parameter. To get a reliable estimator of each parameter, you need sufficient data for each subsample. Sometimes, there are few observations for a given cohort in a given set of time periods.

We can ameliorate this problem by reducing the amount of heterogeneity we assume. For the `twfe` estimator, the complexity of the model comes from the interactions between the observation-level treatment with cohort and time and the interactions between the observation-level treatment, cohort, time, and covariates. This allows us to decide which interactions to include in our model. We could, for instance, allow for heterogeneity at the cohort level instead of at the cohort and time level. We use the `hettype()` option with the argument `cohort()` to do this:

```
. xthdidregress twfe (registered best) (movie), group(breed) hettype(cohort)
note: variable _did_cohort, containing cohort indicators formed by treatment
      variable movie and group variable breed, was added to the dataset.
```

```
Computing ATETs using margins ...
```

```
Treatment and time information
```

```
Time variable: year
```

```
Time interval: 2031 to 2040
```

```
Control:      _did_cohort = 0
```

```
Treatment:   _did_cohort > 0
```

|                   | <code>_did_cohort</code> |
|-------------------|--------------------------|
| Number of cohorts | 4                        |
| Number of obs     |                          |
| Never treated     | 1190                     |
| 2034              | 40                       |
| 2036              | 30                       |
| 2037              | 150                      |

```
Heterogeneous-treatment-effects regression
```

```
Number of obs = 1,410
```

```
Number of panels = 141
```

```
Estimator:      Two-way fixed effects
```

```
Panel variable: breed
```

```
Treatment level: breed
```

```
Control group:  Never treated
```

```
Heterogeneity:  Cohort
```

```
(Std. err. adjusted for 141 clusters in breed)
```

| Cohort | ATET     | Robust<br>std. err. | t     | P> t  | [95% conf. interval] |          |
|--------|----------|---------------------|-------|-------|----------------------|----------|
| 2034   | 1662.492 | 108.002             | 15.39 | 0.000 | 1448.966             | 1876.017 |
| 2036   | 1978.645 | 54.21043            | 36.50 | 0.000 | 1871.468             | 2085.822 |
| 2037   | 2276.223 | 70.63244            | 32.23 | 0.000 | 2136.579             | 2415.867 |

```
Note: ATET computed using covariates.
```

You fit a regression model with fewer terms and obtain treatment effects only at the cohort level. You could also have the treatment effect change over time but not over cohort by typing `cohort(time)`.

For the estimators proposed by [Callaway and Sant'Anna \(2021\)](#), heterogeneity is built in, so we need to estimate all the ATET parameters.

## Stored results

xthdidregress stores the following in `e()`:

### Scalars

|                          |                           |
|--------------------------|---------------------------|
| <code>e(N)</code>        | number of observations    |
| <code>e(N_clust)</code>  | number of clusters        |
| <code>e(N_panels)</code> | number of panels          |
| <code>e(tmin)</code>     | first time period         |
| <code>e(tmax)</code>     | last time period          |
| <code>e(rank)</code>     | rank of <code>e(V)</code> |

### Macros

|                               |                                       |
|-------------------------------|---------------------------------------|
| <code>e(cmd)</code>           | xthdidregress                         |
| <code>e(cmdline)</code>       | command as typed                      |
| <code>e(clustvar)</code>      | name of cluster variable              |
| <code>e(control_group)</code> | control group                         |
| <code>e(het_type)</code>      | heterogeneity type for twfe estimator |
| <code>e(cohortvar)</code>     | name of cohort variable               |
| <code>e(ovar)</code>          | name of outcome variable              |
| <code>e(wtype)</code>         | weight type                           |
| <code>e(wexp)</code>          | weight expression                     |
| <code>e(marginsnotok)</code>  | predictions disallowed by margins     |
| <code>e(ivar)</code>          | panel identifier variable             |
| <code>e(timevar)</code>       | time variable                         |
| <code>e(treatname)</code>     | name of treatment variable            |
| <code>e(estat_cmd)</code>     | program used to implement estat       |
| <code>e(vce)</code>           | vctype specified in vce()             |
| <code>e(vctype)</code>        | title used to label Std. err.         |
| <code>e(method)</code>        | estimator method                      |
| <code>e(properties)</code>    | b V                                   |

### Matrices

|                              |  |
|------------------------------|--|
| <code>e(b)</code>            | coefficient vector                           |
| <code>e(V)</code>            | variance–covariance matrix of the estimators |
| <code>e(cohort_count)</code> | matrix with cohort count information         |

### Functions

|                        |                         |
|------------------------|-------------------------|
| <code>e(sample)</code> | marks estimation sample |
|------------------------|-------------------------|

In addition to the above, the following is stored in `r()`:

### Matrices

|                       |  |
|-----------------------|--|
| <code>r(table)</code> | matrix containing the coefficients with their standard errors, test statistics, <i>p</i> -values, and confidence intervals |
|-----------------------|--|

Note that results stored in `r()` are updated when the command is replayed and will be replaced when any `r`-class command is run after the estimation command.

## Methods and formulas

Methods and formulas are presented under the following headings:

*The model*

*The RA, IPW, and AIPW estimators*

*Panel data*

*The TWFE estimator*

## The model

`xthdidregress` estimates the treatment-effects parameters using the DID approach 1) with multiple periods, 2) with different timing when a unit is first treated, and 3) when the treatment effects can be heterogeneous across time and cohort. In particular, `xthdidregress` provides the RA, IPW, and AIPW estimators, outlined in Callaway and Sant’Anna (2021), and the TWFE estimator, outlined in Wooldridge (2021).

We observe data  $\{y_{it}, \mathbf{x}_{it}, d_{it}, \mathbf{z}_{it}\}$  for unit  $i$  at time  $t$  with unit  $i, i = 1, \dots, N$ , and time  $t$ , with  $t = 1, \dots, T$ , where

1.  $y_{it}$  is the observed outcome;
2.  $\mathbf{x}_{it}$  are covariates for the outcome model;
3.  $d_{it}$  is an indicator that equals one if an observation is treated or zero otherwise; and
4.  $\mathbf{z}_{it}$  are the covariates for the treatment-assignment model.

Denote  $y_{it}(g)$  as the potential outcome for unit  $i$  at time  $t$  if it was first treated at time  $g$ . Denote  $y_{it}(0)$  as the potential outcome for unit  $i$  and  $t$  if it is never treated. All the units can be grouped into cohorts, and each cohort starts the treatment simultaneously. For example, cohort  $g$  means all the units start treatment at time  $g$ . Let  $G_{ig}$  be an indicator that equals one if unit  $i$  is first treated at time  $g$ . Then the units in cohort  $g$  can be denoted by  $G_{ig} = 1$ . When a unit  $i$  is never treated, we denote  $G_{i0} = 1$ . Thus, cohort 0 indicates all the units that are never treated. We assume that once a unit is treated, it will remain treated.

To reveal how the heterogeneous treatment effects evolve across cohorts and time, we are interested in estimating the ATET for each combination of cohort and time. Let  $\theta(g, t)$  be the ATET for cohort  $g$  at time  $t$ , which is defined as

$$\theta(g, t) = \mathbf{E} \{y_t(g) - y_t(0) | G_g = 1\} \quad (\text{ATET})$$

where  $G_g$  equals 1 if a unit belongs to cohort  $g$ . All the four estimators provided in `xthdidregress` and `hdidregress` estimate  $\theta(g, t)$  in equation (ATET). We cannot directly estimate  $\theta(g, t)$  using equation (ATET) because the potential outcomes  $y_t(g)$  and  $y_t(0)$  are not observable.

Next, we will describe the RA, IPW, and AIPW estimators.

## The RA, IPW, and AIPW estimators

To define treatment effect, we need a control group. There are two ways to define the control group. One way is to use the units that are never treated as the control group. Let  $C^{\text{NEV}}$  be an indicator that equals one if a unit belongs to the never-treated group. In particular,  $C^{\text{NEV}} = G_0$ . Another way is to use the units not in cohort  $g$  and not yet treated at time  $t$  as the control group. Let  $C_{g,t}^{\text{NY}}$  be an indicator that equals one if a unit belongs to the not-yet-treated group by time  $t$ . In particular,  $C_{g,t}^{\text{NY}} = (1 - G_g)(1 - d_t)$ . To simplify, we indicate control, in both cases, as  $C_{g,t}^*$ .

The definitions of the RA, IPW, and AIPW estimators depend on the definition of  $C_{g,t}^*$ , which can either be  $C^{\text{NEV}}$  or  $C_{g,t}^{\text{NY}}$ . However, regardless of the control group’s choice, the estimators’ definitions can always be written using the general notation  $C_{g,t}^*$ .



## Panel data

The estimands for RA, IPW, and AIPW are defined as follows.

The RA estimand is

$$\theta_{\text{RA}}(g, t) = \mathbf{E} \left[ \frac{G_g}{\mathbf{E}(G_g)} \{y_t - y_{g-1} - m_{g,t}(\mathbf{x})\} \right] \quad (\text{RA})$$

where  $m_{g,t}(\mathbf{x}) = \mathbf{E}(y_t - y_{g-1} | \mathbf{x}, C_{g,t}^* = 1)$ .

The IPW estimand is

$$\theta_{\text{IPW}}(g, t) = \mathbf{E} \left( \left[ \frac{G_g}{\mathbf{E}(G_g)} - \frac{\frac{p_{g,t}(\mathbf{z})C_{g,t}^*}{1-p_{g,t}(\mathbf{z})}}{\mathbf{E} \left\{ \frac{p_{g,t}(\mathbf{z})C_{g,t}^*}{1-p_{g,t}(\mathbf{z})} \right\}} \right] (y_t - y_{g-1}) \right) \quad (\text{IPW})$$

where

$$p_{g,t}(\mathbf{z}) = \text{Pr}(G_g = 1 | \mathbf{z}, G_g + C_{g,t}^* = 1) \quad (\text{Pz})$$

The AIPW estimand is

$$\theta_{\text{AIPW}}(g, t) = \mathbf{E} \left( \left[ \frac{G_g}{\mathbf{E}(G_g)} - \frac{\frac{p_{g,t}(\mathbf{z})C_{g,t}^*}{1-p_{g,t}(\mathbf{z})}}{\mathbf{E} \left\{ \frac{p_{g,t}(\mathbf{z})C_{g,t}^*}{1-p_{g,t}(\mathbf{z})} \right\}} \right] \{y_t - y_{g-1} - m_{g,t}(\mathbf{x})\} \right) \quad (\text{AIPW})$$

Callaway and Sant'Anna (2021) show that the estimand for RA, IPW, and AIPW is the same as  $\theta(g, t)$  in equation (ATET). In other words,

$$\theta(g, t) = \theta_{\text{RA}}(g, t) = \theta_{\text{IPW}}(g, t) = \theta_{\text{AIPW}}(g, t)$$

However, unlike the nonestimable  $\theta(g, t)$  in equation (ATET), the estimands in equation (RA), (IPW), and (AIPW) are estimable because only the observed random variables such as  $\mathbf{x}$ ,  $y$ ,  $\mathbf{z}$ ,  $G_g$ , and  $C_{g,t}^*$  are used.

The identification of the estimators sheds light on how to estimate  $\theta(g, t)$ . The estimator can be generally divided into three steps:

1. Restrict the sample to time  $t$  and  $t_0$ , and keep only the units in cohort  $g$  or in control group  $C_{g,t}^*$ , where  $t_0 = g - 1$  if  $t \geq g$  or  $t_0 = t - 1$  if  $t < g$ . Only the paired observations are used. In other words, unit  $i$  will be used if it is observed at both times  $t$  and  $t_0$ .
2. Use a parametric model to estimate the nuisance function for  $p_{g,t}(\mathbf{z})$  and  $m_{g,t}(\mathbf{x})$ . In practice, we use a linear regression model to fit  $m_{g,t}(\mathbf{x})$  and a logit regression model to fit  $p_{g,t}(\mathbf{z})$ . In particular, do the following:
  - a. Run a linear regression of  $y_t - y_{t_0}$  on  $\mathbf{x}$  when  $C_{g,t}^* = 1$ .
  - b. Denote the linear predictor as  $\widehat{m}_{g,t}(\mathbf{x})$ .
  - c. Run a logit regression of  $G_g$  on  $\mathbf{z}$ .
  - d. Denote the prediction of the probability of a positive outcome as  $\widehat{p}_{g,t}(\mathbf{z})$ .
3. Plug in the nuisance function estimates  $\widehat{m}_{g,t}(\mathbf{x})$ ,  $\widehat{p}_{g,t}(\mathbf{z})$ , or both into the estimating equation in equation (RA), (IPW), or (AIPW). Notice that the expectation operator  $\mathbf{E}(\cdot)$  is replaced by the sample average.

The variance–covariance matrix for  $\widehat{\theta}(g, t)$  for each cohort  $g$  and time  $t$  is computed using the influence function approach proposed in theorem 2 in Callaway and Sant’Anna (2021). The influence function approach is numerically equivalent to the generalized method-of-moments approach. However, it is much faster because it avoids computing the covariance matrix for the parameters in the nuisance functions  $m_{g,t}(\mathbf{x})$  and  $p_{g,t}(\mathbf{z})$ . For more discussions on influence functions, see Hampel et al. (1986), Newey and McFadden (1994), and Jann (2020).

## The TWFE estimator

A TWFE estimator fits

$$y_{it} = \alpha_i + \gamma_t + \mathbf{x}_{it}\beta + d_{it}\tau + \varepsilon_{it}$$

Wooldridge (2021) extends this model to incorporate interactions between the treatment,  $d_{it}$ , cohort,  $G_{ig}$ , posttreatment periods, and covariates. We define indicators for posttreatment period as  $f_s$  with  $s$  going from  $q$  to  $T$ , where  $q$  is the first time period we observe treatment. For instance,  $f_q$  equals 1 if we are in time period  $q$  and 0 otherwise. To simplify this notation, we show the model without covariates. The extended fixed-effects model is given by

$$y_{it} = \eta + \sum_{g=q}^T G_{ig}\alpha_g + \sum_{s=q}^T f_s\gamma_s + \sum_{g=q}^T \sum_{s=g}^T d_{it}G_{ig}f_s\tau_{gs} + \varepsilon_{it} \quad (\text{TWFE})$$

We can fit equation (TWFE) using pooled ordinary least squares or a within estimator. We are going to use the estimator proposed by Mundlak (1978). This gives the same point estimates as using the within estimator of `xtnreg ... , fe` for the parameters in equation (TWFE) but has different degrees of freedom because of the additional terms added by the Mundlak approach. Unlike within estimation, the Mundlak approach works for both repeated cross-sectional data and panel data. Also, it has good properties to obtain partial effect under various data-generating processes, as pointed out in Wooldridge (2019).

Above, the  $\tau_{gs}$  are the cohort-time treatment effects. When we have covariates, we interact them with all the relevant variables in the model. To get the treatment effects in this case, we need to control for the variation in the covariates. We can obtain both effects using `margins`.

In particular, we are going to type

```
. margins, dydx(d) at(year=q ... year=T) over(cohort) vce(unconditional)
```

where `d` is the treatment indicator, `year` indicates treatment times at which treatment will be evaluated using `at()`, and `cohort` is the treatment-time cohorts. We use `vce(unconditional)` to account for the variation in the covariates.

With the `hettype()` option, we reduce the complexity of (TWFE). In particular, if we ask for `hettype(time)`, we have

$$y_{it} = \eta + \sum_{g=q}^T G_{ig}\alpha_g + \sum_{s=q}^T f_s\gamma_s + \sum_{s=q}^T d_{it}f_s\tau_s + \varepsilon_{it}$$

Now treatment varies over time but not over cohort, that is,  $\tau_s$ . If we use the `hettype(cohort)` option, we have

$$y_{it} = \eta + \sum_{g=q}^T G_{ig} \alpha_g + \sum_{s=q}^T f_s \gamma_s + \sum_{g=q}^T d_{it} G_{ig} \tau_g + \varepsilon_{it}$$

Now treatment varies over cohort but not over time, that is,  $\tau_g$ .

When the `controlgroup(notyet)` option is specified, the  $G_{ig}$  indicator excludes the last treated cohort. As discussed in Wooldridge (2021), when every group is eventually treated, we cannot identify the treatment effect for this cohort. It is therefore sensible to use the last treated cohort as a control group. When some of the units in our sample are never treated, we can always identify all cohorts, and the `twfe` estimator will always revert to using `controlgroup(never)`.

## Acknowledgments

We thank Fernando Rios-Avila of the Levy Economics Institute of Bard College for helpful conversations and advice and for his contributions in developing heterogeneous treatment-effects software and accompanying material. His community-contributed commands `csdid` and `drdid` implement some of the methods in this entry and a few others we have yet to include.

We thank Pedro H. C. Sant’Anna of Vanderbilt University for helpful conversations and advice and for his continuing contributions to the heterogeneous treatment-effects literature.

We thank Jeff Wooldridge of Michigan State University for helpful conversations about extended two-way fixed-effects estimation.

We also thank Austin Nichols of Amazon for his advice, for his insights, and for organizing the WHYDC causal inference conference.

## References

- Callaway, B., and P. H. C. Sant’Anna. 2021. Difference-in-differences with multiple time periods. *Journal of Econometrics* 225: 200–230. <https://doi.org/10.1016/j.jeconom.2020.12.001>.
- de Chaisemartin, C., and X. D’Haultfœuille. Forthcoming. Two-way fixed effects and differences-in-differences with heterogeneous treatment effects: A survey. *Econometrics Journal*. <https://doi.org/10.1093/ectj/utac017>.
- Ghirlanda, S., A. Acerbi, and H. Herzog. 2014. Dog movie stars and dog breed popularity: A case study in media influence on choice. *PLOS ONE* 9: e106565. <https://doi.org/10.1371/journal.pone.0106565>.
- Hampel, F. R., E. M. Ronchetti, P. J. Rousseeuw, and W. A. Stahel. 1986. *Robust Statistics: The Approach Based on Influence Functions*. New York: Wiley.
- Jann, B. 2020. Influence functions continued. A framework for estimating standard errors in reweighting, matching, and regression adjustment. Working Papers 35, University of Bern Social Sciences. <https://ideas.repec.org/p/bss/wpaper/35.html>.
- Mundlak, Y. 1978. On the pooling of time series and cross section data. *Econometrica* 46: 69–85. <https://doi.org/10.2307/1913646>.
- Newey, W. K., and D. L. McFadden. 1994. Large sample estimation and hypothesis testing. In Vol. 4 of *Handbook of Econometrics*, ed. R. F. Engle and D. L. McFadden, 2111–2245. Amsterdam: Elsevier. [https://doi.org/10.1016/S1573-4412\(05\)80005-4](https://doi.org/10.1016/S1573-4412(05)80005-4).
- Roth, J., P. H. C. Sant’Anna, A. Bilinski, and J. Poe. 2022. What’s trending in difference-in-differences? A synthesis of the recent econometrics literature. ArXiv Working Paper No. arXiv:2201.01194. <https://doi.org/10.48550/arXiv.2201.01194>.
- Wooldridge, J. M. 2019. Correlated random effects models with unbalanced panels. *Journal of Econometrics* 211: 137–150. <https://doi.org/10.1016/j.jeconom.2018.12.010>.

—. 2021. Two-way fixed effects, the two-way Mundlak regression, and difference-in-differences estimators. Working paper, Department of Economics, Michigan State University, East Lansing, MI.  
<https://dx.doi.org/10.2139/ssrn.3906345>.

### Also see

[CAUSAL] `hdidregress` **postestimation** — Postestimation tools for `hdidregress` and `xthdidregress`

[CAUSAL] `hdidregress` — Heterogeneous difference in differences

[CAUSAL] **DID intro** — Introduction to difference-in-differences estimation

[CAUSAL] `didregress` — Difference-in-differences estimation

[CAUSAL] **teffects intro** — Introduction to treatment effects for observational data

[CAUSAL] **teffects intro advanced** — Advanced introduction to treatment effects for observational data

[U] **20 Estimation and postestimation commands**

Stata, Stata Press, and Mata are registered trademarks of StataCorp LLC. Stata and Stata Press are registered trademarks with the World Intellectual Property Organization of the United Nations. Other brand and product names are registered trademarks or trademarks of their respective companies. Copyright © 1985–2023 StataCorp LLC, College Station, TX, USA. All rights reserved.

